

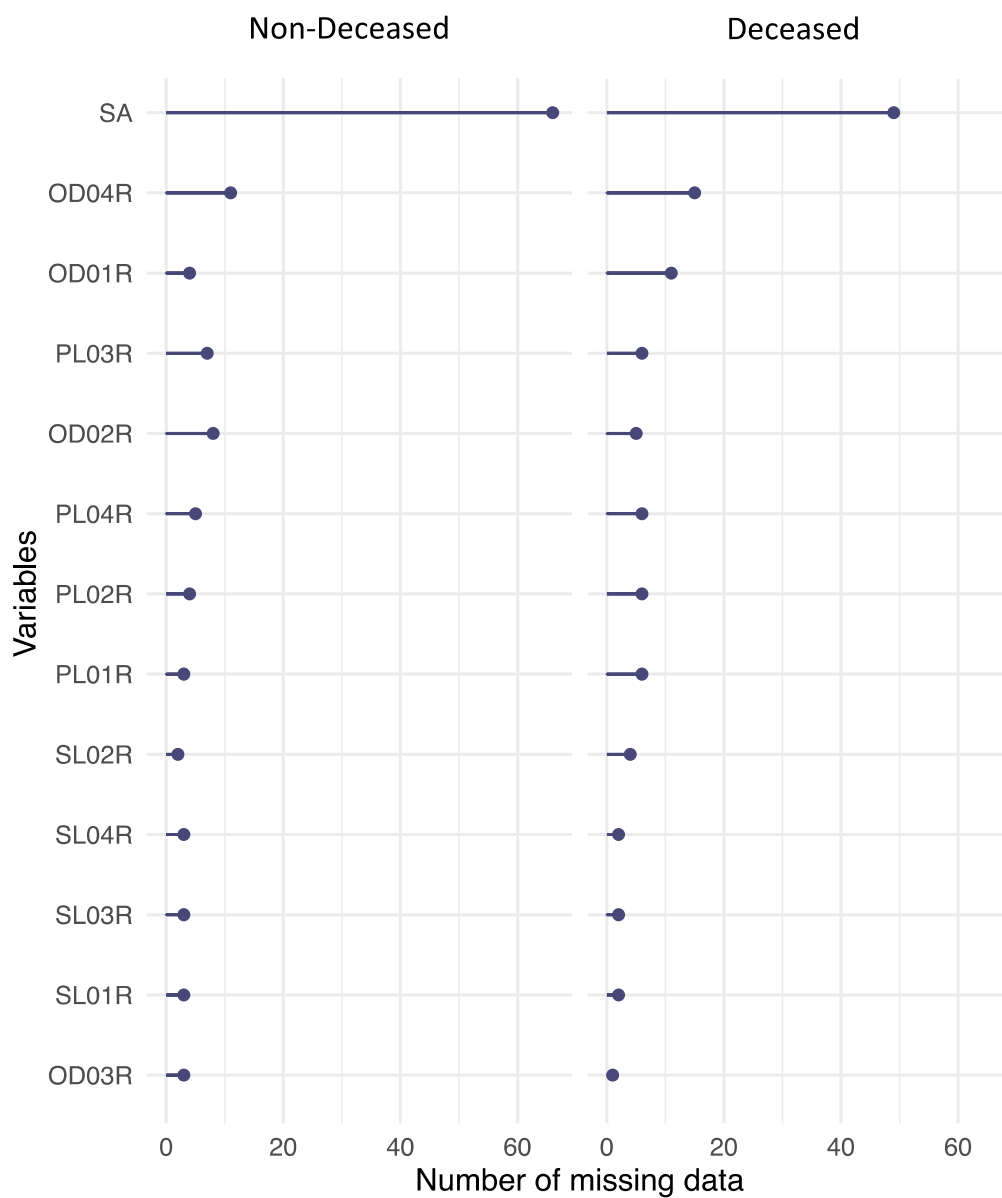
Supplementary Material

Title: Gain- but Not Loss-Related Self-Perceptions of Aging Predict Mortality Over a Period of 23 Years:

A Multidimensional Approach

Figure SM1

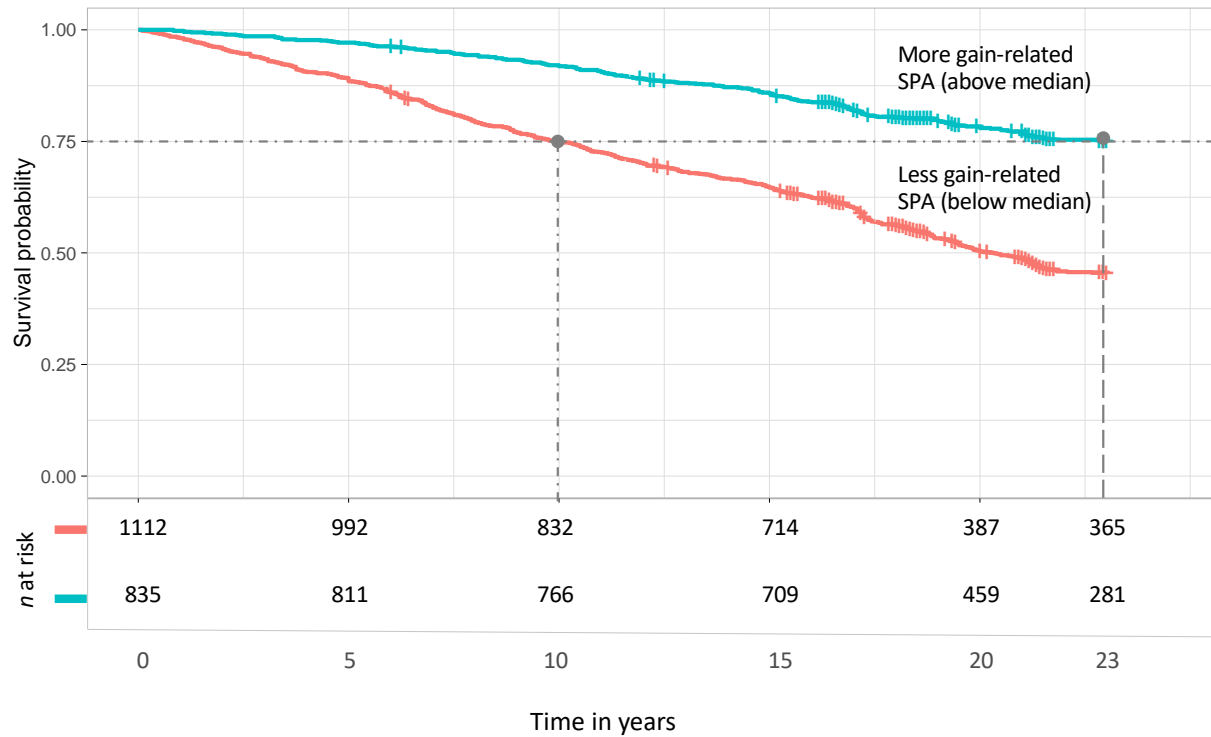
Absolute Number of Missing Data



Note. SA = subjective age; OD = Self-perceptions of aging related to ongoing development; PL = Self-perceptions of aging related to physical losses; SL = Self-perceptions of aging related to social losses.

Figure SM2

Alternative Schematic Illustration of the Effect of Gain-Related Self-Perceptions on Aging on Mortality



Note. Kaplan-Meier curve as schematic illustration of the effect of gain-related self-perceptions of aging on mortality using a median split and imputed data. After 10 years 25% of the individuals with below median gain-related SPA were deceased, while this percentage of deaths was only reached after 22.9 years for individuals with above median gain-related SPA.

Table SM1

Additional Information on Sensitivity Analyses

		<i>HR</i>	95% CI		<i>z</i>	<i>p</i>
			lower	upper		
Self-perceptions of aging (SPA)	Model 1.1	see main text				
	Model 1.2	see main text				
	Model 1.3	see main text				
	Model 1.4	Gain-related SPA (ongoing development)	0.82	0.76	0.88	-5.49
	Loss-related SPA (physical)	1.07	0.99	1.15	1.61	.105

	Loss-related SPA (social)	1.00	0.93	1.08	0.06	.951
	Age	3.46	0.93	1.08	28.14	< .001
Likelihood ratio test	<i>df</i> = 4	1210				< .001
Wald test	<i>df</i> = 4	1036				< .001
Model 1.5	Gain-related SPA (ongoing development)	0.63	0.59	0.68	-12.17	< .001
	Loss-related SPA (physical)	1.35	1.24	1.46	7.38	< .001
	Loss-related SPA (social)	-0.03	0.90	1.04	-7.05	.411
	Gender	-0.50	0.53	0.70	-7.05	< .001
Likelihood ratio test	<i>df</i> = 4	356.9				< .001
Wald test	<i>df</i> = 4	362				< .001
Model 1.6	Gain-related SPA (ongoing development)	0.65	0.60	0.70	-11.70	< .001
	Loss-related SPA (physical)	1.31	1.22	1.43	6.92	< .001
	Loss-related SPA (social)	0.96	0.90	1.04	-1.01	0.313
	Education	0.81	0.73	0.90	-3.97	< .001
Likelihood ratio test	<i>df</i> = 4	321.6				< .001
Wald test	<i>df</i> = 4	342.4				< .001
Model 1.7	Gain-related SPA (ongoing development)	0.67	0.63	0.73	-10.51	< .001
	Loss-related SPA (physical)	1.19	1.09	1.29	4.05	< .001
	Loss-related SPA (social)	0.95	0.89	1.02	-1.33	.185
	Self-rated health	1.33	1.23	1.42	7.69	< .001
Likelihood ratio test	<i>df</i> = 4	363.9				< .001
Wald test	<i>df</i> = 4	400.9				< .001
Model 1.8	Gain-related SPA (ongoing development)	0.65	0.61	0.70	-11.58	< .001
	Loss-related SPA (physical)	1.19	1.10	1.29	4.26	< .001
	Loss-related SPA (social)	0.96	0.90	1.04	-0.99	.322
	Morbidity	1.40	1.31	1.50	10.07	< .001
Likelihood ratio test	<i>df</i> = 4	400.5				< .001
Wald test	<i>df</i> = 4	425.3				< .001
Model 1.9	Gain-related SPA (ongoing development)	0.63	0.59	0.68	-12.38	< .001

	Loss-related SPA (physical)	1.33	1.23	1.44	7.03	< .001
	Loss-related SPA (social)	0.97	0.90	1.04	-0.82	.415
	Place of Residency	1.08	0.94	1.24	1.10	.271
Likelihood ratio test	<i>df</i> = 4	306.4				< .001
Wald test	<i>df</i> = 4	321.3				< .001
Model 1.10	Gain-related SPA (ongoing development)	0.63	0.59	0.68	-12.57	< .001
	Loss-related SPA (physical)	1.33	1.23	1.44	7.05	< .001
	Loss-related SPA (social)	0.99	0.92	1.07	-0.18	.860
	Loneliness	0.95	0.88	1.02	-1.45	.146
Likelihood ratio test	<i>df</i> = 4	308.4				< .001
Wald test	<i>df</i> = 4	324.5				< .001
Model 1.11	Gain-related SPA (ongoing development)	0.65	0.60	0.69	-12.06	< .001
	Loss-related SPA (physical)	1.38	1.28	1.50	8.09	< .001
	Loss-related SPA (social)	1.04	0.97	1.12	1.11	.267
	Negative affect	0.72	0.67	0.77	-8.95	< .001
Likelihood ratio test	<i>df</i> = 4	387.2				< .001
Wald test	<i>df</i> = 4	413				< .001
Model 1.12	Gain-related SPA (ongoing development)	-0.53	0.54	0.63	-13.65	< .001
	Loss-related SPA (physical)	0.27	1.22	1.42	6.86	< .001
	Loss-related SPA (social)	0.01	0.94	1.09	0.35	.725
	Hope	0.20	1.13	1.31	5.13	< .001
Likelihood ratio test	<i>df</i> = 4	333.1				< .001
Wald test	<i>df</i> = 4	353.6				< .001
Model 1.13	Gain-related SPA (ongoing development)	0.65	0.60	0.70	-10.66	< .001
	Loss-related SPA (physical)	1.32	1.22	1.43	6.84	< .001
	Loss-related SPA (social)	0.96	0.89	1.03	-1.10	.276
	Positive affect	0.94	0.86	1.02	-1.50	.134
Likelihood ratio test	<i>df</i> = 4	309				< .001
Wald test	<i>df</i> = 4	325.3				< .001

Model 1.14	Gain-related SPA (ongoing development)	0.60	0.55	0.64	-13.77	< .001
	Loss-related SPA (physical)	1.33	1.23	1.44	7.11	< .001
	Loss-related SPA (social)	1.02	0.95	1.10	0.60	.549
	Life satisfaction	1.26	1.17	1.36	6.23	< .001
Likelihood ratio test	<i>df</i> = 4	347.4				< .001
Wald test	<i>df</i> = 4	362.5				< .001
Model 1.15	Gain-related SPA (ongoing development)	0.68	0.62	0.74	-9.03	< .001
	Loss-related SPA (physical)	1.14	1.05	1.24	3.21	.001
	Loss-related SPA (social)	1.04	0.96	1.12	0.91	.366
	Gender	0.57	0.49	0.66	-7.49	< .001
	Education	0.78	0.69	0.87	-4.32	< .001
	Morbidity	1.33	1.20	1.41	6.35	< .001
	Self-rated health	1.30	1.24	1.43	7.90	< .001
	Place of Residency	1.31	1.14	1.52	3.72	< .001
	Loneliness	1.07	0.99	1.15	1.63	.103
	Negative affect	0.75	0.70	0.81	-7.25	< .001
	Hope	1.05	0.96	1.15	1.15	.250
	Positive affect	0.97	0.89	1.06	-0.66	.511
	Life satisfaction	1.31	1.25	1.43	6.26	< .001
Likelihood ratio test	<i>df</i> = 13	646.4				< .001
Wald test	<i>df</i> = 13	683				< .001

Note. All results represent pooled estimates based on 20 imputed data sets.

df = degrees of freedom; *HR* = Hazard Ratio.